

Per Month

£1,400

****AVAILABLE NOW** **UNFURNISHED****

This recently redecorated two-bedroom cottage is offered to the market on an unfurnished basis and is situated in the highly sought-after village of Bishopstone. The accommodation comprises a spacious living room, a separate dining room with patio doors leading to an enclosed rear garden, a fitted kitchen, two bedrooms, and a family bathroom. The property further benefits from a garage and driveway parking.

HOLDING FEE: £323.10

DEPOSIT REQUIRED: £1,615.50

- AVAILABLE NOW
- FITTED KITCHEN
- LIVING ROOM
- ENCLOSED REAR GARDEN
- MODERN BATHROOM
- TWO BEDROOMS
- DRIVEWAY PARKING
- DINING ROOM
- UNFURNISHED
- RECENTLY REDECORATED

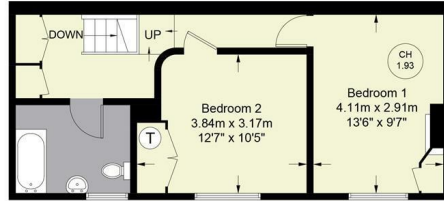


36 Bishopstone, Aylesbury, HP17 8SF

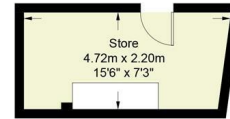
Estate Agents ~ Lettings Agents ~ Valuers ~ Independent Mortgage Advisors

Bishopstone

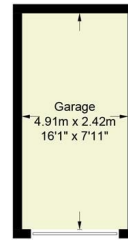
Approximate Gross Internal Area
 Lower Ground Floor = 103 sq ft / 9.6 sq m
 Ground Floor = 376 sq ft / 34.9 sq m
 First Floor = 423 sq ft / 39.3 sq m
 Garage / Store = 235 sq ft / 21.8 sq m
 Total = 1137 sq ft / 105.6 sq m



FIRST FLOOR

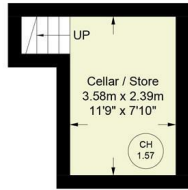


(Not Shown In Actual Location / Orientation)

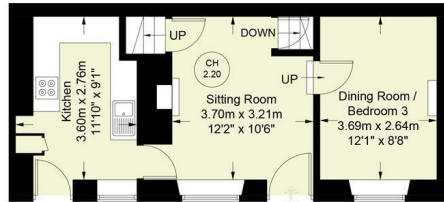


(Not Shown In Actual Location / Orientation)

CH 2.20 = Ceiling Height



LOWER GROUND FLOOR



GROUND FLOOR

Floor Plan produced for Hursts by Media Arcade Ltd ©.
 Illustration for identification purposes only. Window and door openings are approximate. Whilst every attempt is made to assure accuracy in the preparation of this plan, please check all dimensions, shapes and compass bearings before making any decisions reliant upon them.

